



ECOHEAT



MOBILE BOILERHOUSES



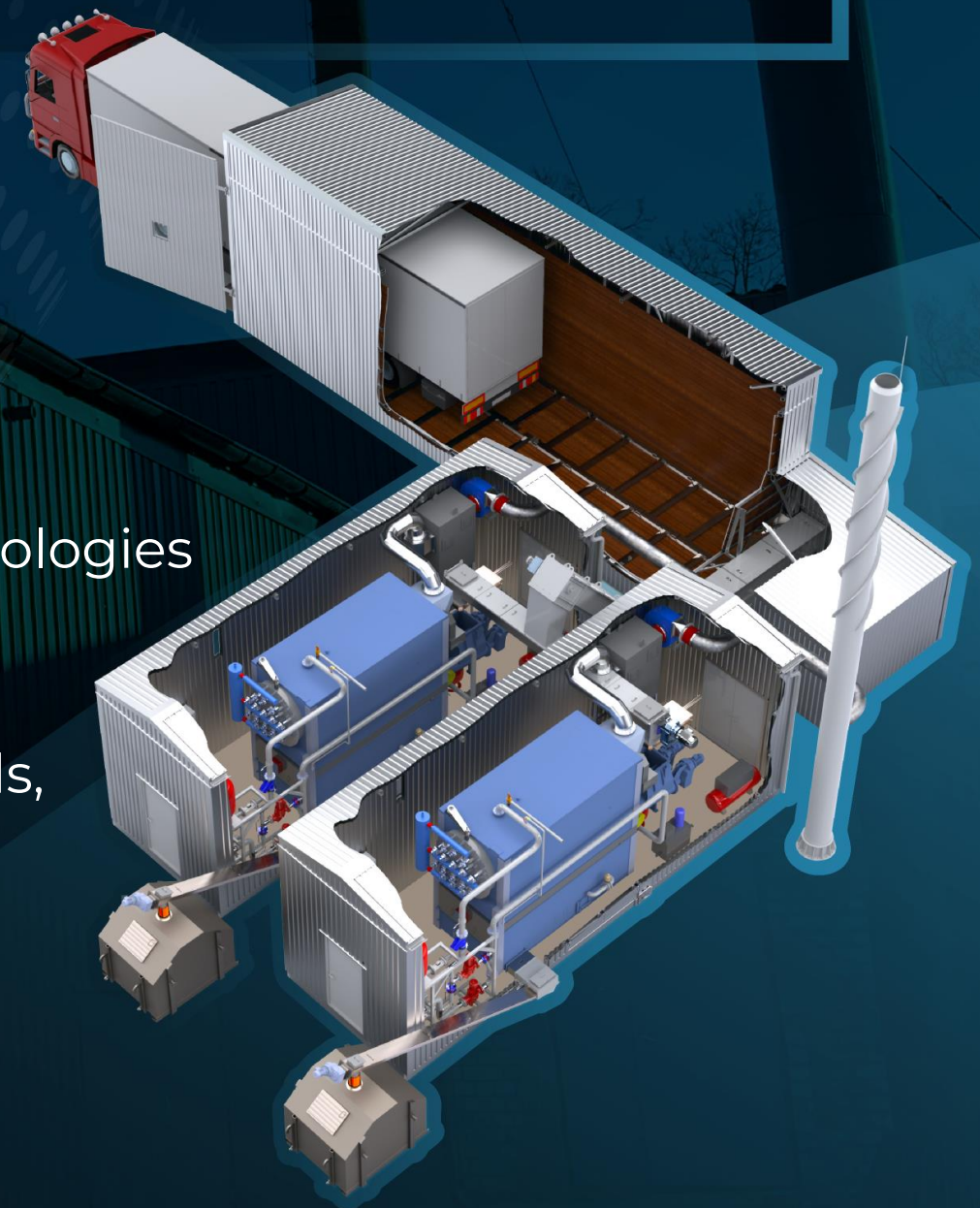
ECO-FRIENDLY & SUSTAINABLE
DISTRICT HEATING SOLUTIONS

➤ ECOHEAT - MODULAR BOILER HOUSES

ECOHEAT leadership and engineers have 10+ years of successful experience in full-cycle project delivery throughout the Baltics and Scandinavia

WHY CHOOSE ECOHEAT:

- Portable asset
- Up to 30% less capex savings if compared to construction of stationary solution
- Fast project implementation
- Simplified cooperation with construction boards
- High efficiency in the use of equipment and technologies
- Possibility to use different types of fuel
- Wide operating power range
- Manufactured in full compliance with EU standards, meeting environmental requirements
- Safe to operate and long-lasting

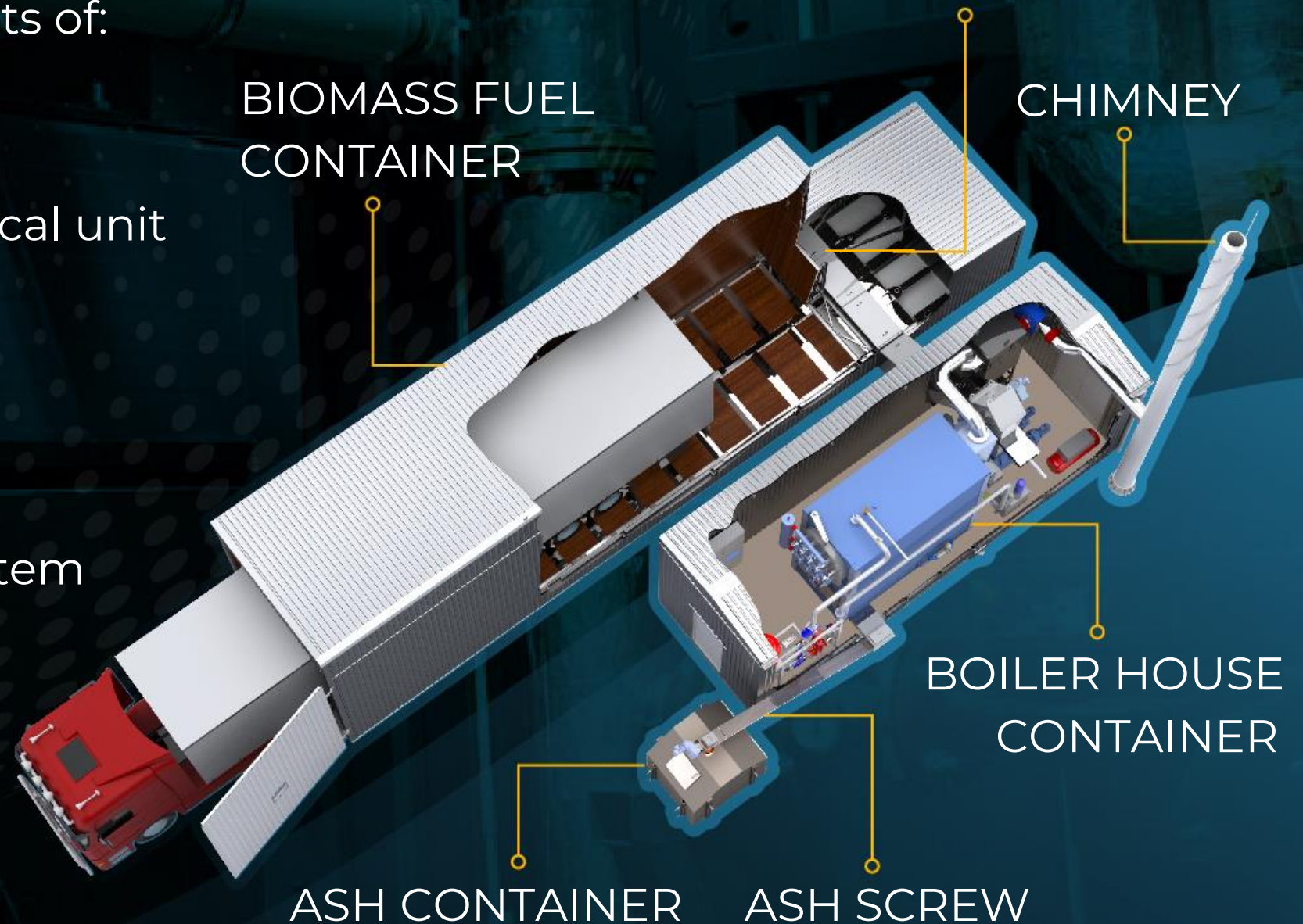


MODULAR BOILER HOUSES

Base boiler house set consists of:

- biomass boiler
- heat piping system
- automatization and electrical unit
- fuel feeding system
- ash removal system
- pneumatic system (including compressor)
- flue gas basic cleaning system (multicyclone)
- chain conveyor
- chimney

MODULAR BOILER HOUSE SET CONSISTS OF:



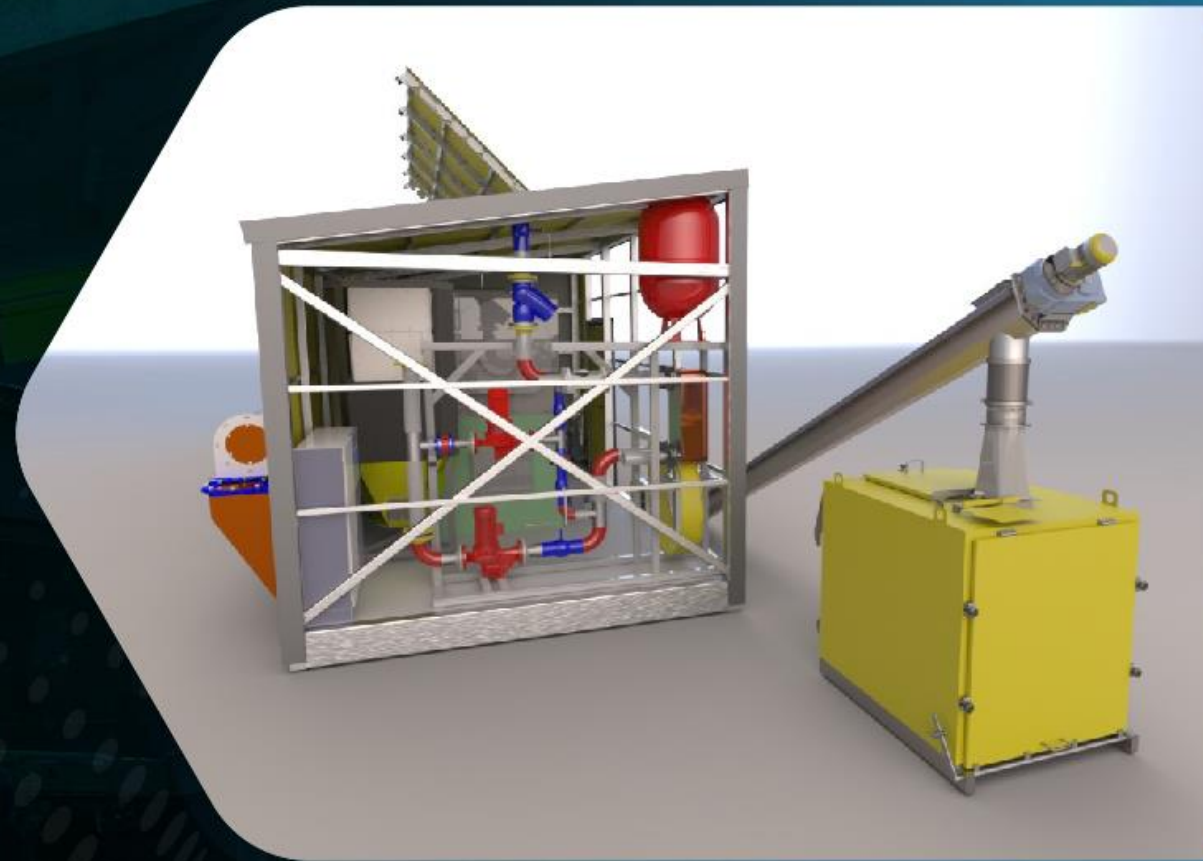
➤ NOMINAL POWER OPTIONS*

- 250 kW
- 350 kW
- 500 kW
- 800 kW
- 1000 kW
- In cascade:
- 1500 kW
- 2000 kW
- 3000 kW

BASIC TECH DATA

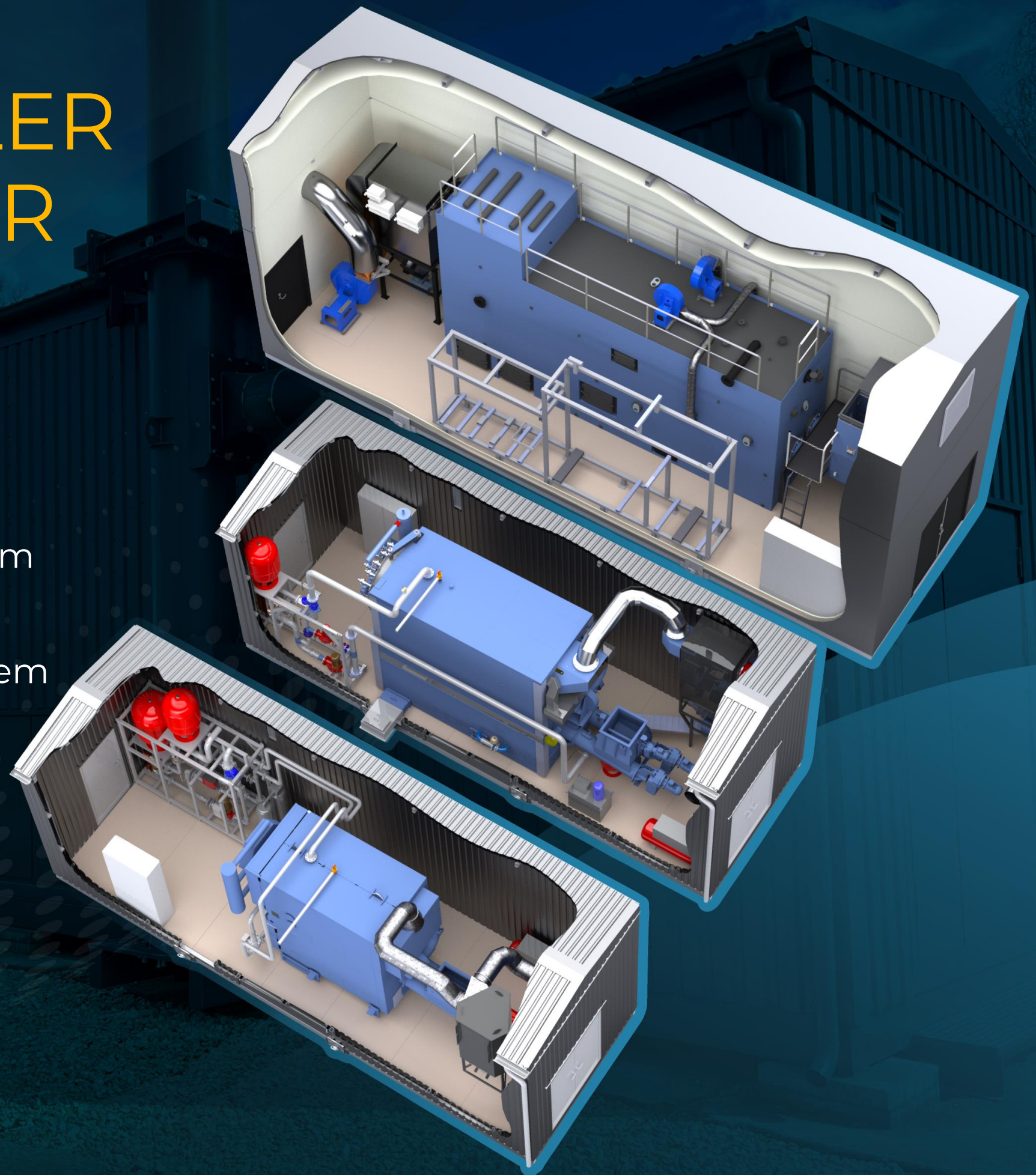
- heat carrier up to 6 BAR, 100 deg C
- range of possibly used fuel moisture 15-55% (forest woodchips)
- fraction of possible fraction – G100 (woodchips)

*At 55% woodchip moisture & efficiency rated at $\geq 87\%$



➤ BASE BOILER CONTAINER

- insulated container
- biomass boiler
- soot blowing system
- automatic de-ash system
- fuel feeder
- heat carrier piping system
- hydraulic power unit
- multicyclone
- flue gas ducts
- automation system



➤ MODULAR BOILER HOUSE

We offer following chimneys modifications:

- painted outer shell
- corten steel outer shell
- stainless inner shell



Addition optional equipment:

- water pretreatment system (deoxygenation; de-ironing system)
- flu gas cleaning systems (electrostatic filters, bag house filters, scrubbers)
- heat accumulation tanks
- video monitoring systems

- Siemens S7 1200 PLC
- Schneider contactors
- HMI Beijer, 10 inch touchscreen
- Online fuel consumption monitoring
- KSB pumps
- 28% chrome content combustion grates
- Process flow charts and P&ID schemes on the boilerhouse inside walls



Preheated primary air supply

1650 deg C^o resistant
refractory lining

Robust fuel infeder,
designed to handle
G100 fraction

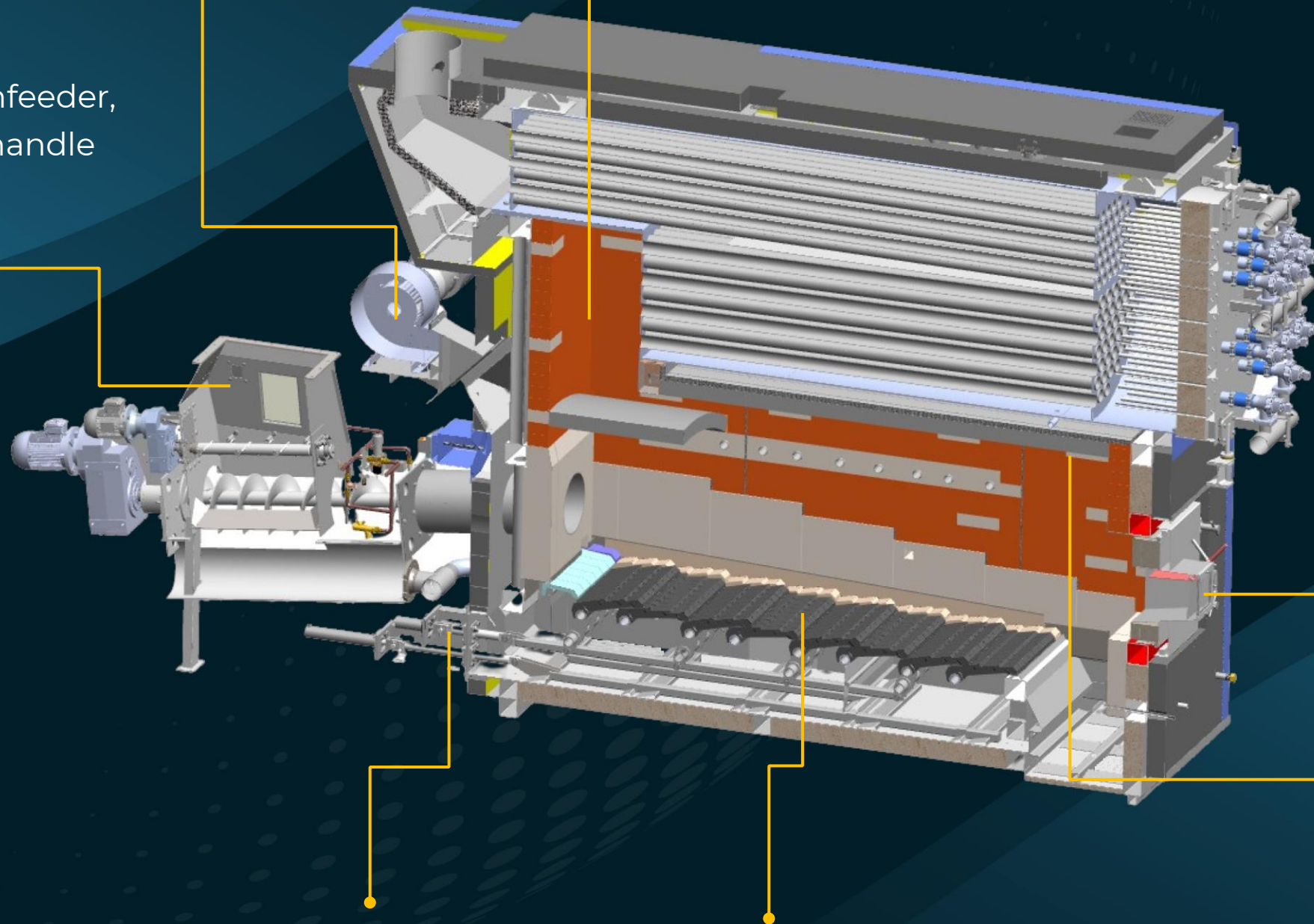
Large inspection
window

Heat carrier
cooled
furnace jacket

Hydraulic driven grate
movement and ash
systems

Heat carrier and
air cooled grate

*0,98 MW boiler
reference



➤ FUEL STORAGE CONTAINERS

Wide range of fuel storage volume options. Great opportunity to choose – long lasting supply ensures boiler house operates without frequent refillment. All offered solutions are completely mobile or modular.



➤ 100 m³ FUEL STORAGE CONTAINER

Options:

- 100 m³ fuel storage unit with openable roof, loading from top (with front loader)
- two hydraulic driven scraper bars covering all floor surface
- roof lifted with three hydraulic cylinders
- storage equipped with hydraulic powerpack
- inner surfaces made of thick moisture resistant plywood



➤ 150 m³ FUEL STORAGE CONTAINER

Options:

- 150 m³ “drive in” fuel storage
- transportable as one unit
- standard 90m³ truck is capable to easily unload all amount of wood chips
- two hydraulic driven scraper bars covering all floor surface
- storage equipped with hydraulic powerpack
- inner surfaces made out of thick moisture resistant plywood



➤ 300m³ FUEL STORAGE CONTAINER

Options:

- 2 x 150 m³ “drive in” fuel storage*
- standard 90m³ truck is capable to easily unload all amount of fuel
- great possibility to mix two different fuels
- two hydraulic driven scraper bars covering all floor surface
- storage equipped with hydraulic powerpack
- inner surfaces made of thick moisture resistant plywood

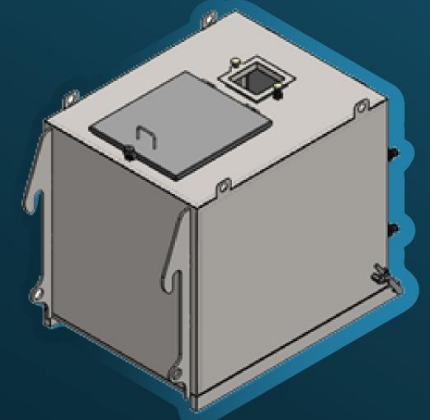
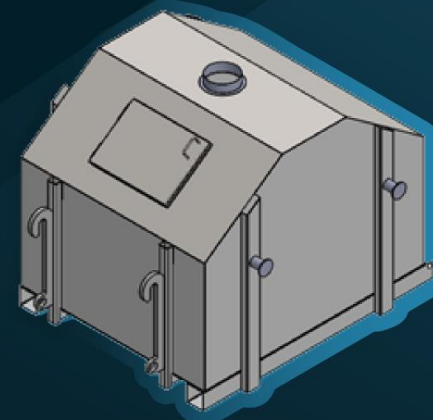
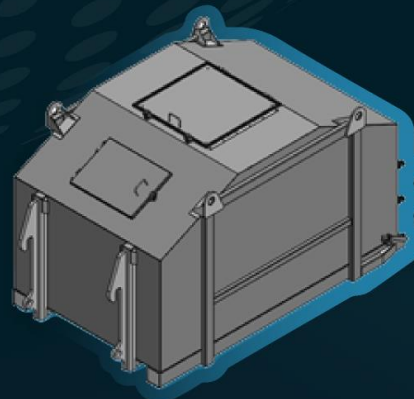
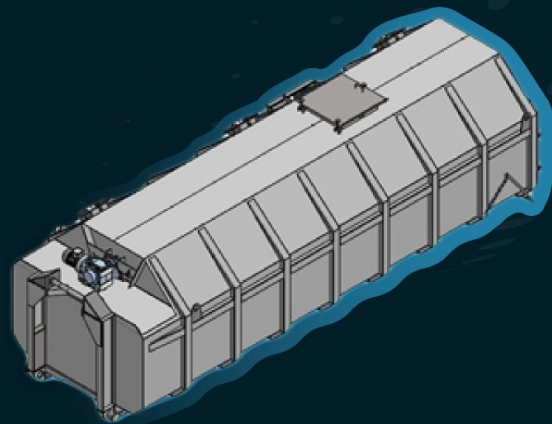


*Delivered as prefabricated modules (floor, walls, ceiling) “Lego” installation on the site

➤ ASH CONTAINERS

Ash container options:

- 1 m³ container front loader hooks and skip trailer hooks (trash container)
- 3,5 m³ container front loader hooks and skip trailer hooks (trash container)
- 5 m³ container front loader hooks and skip trailer hooks (trash container)
- 11 m³ container with ash leveling screw and “euro hooklift” mount



➤ T3 ULTRA COMPACT MODULAR BOILER HOUSE 250KW

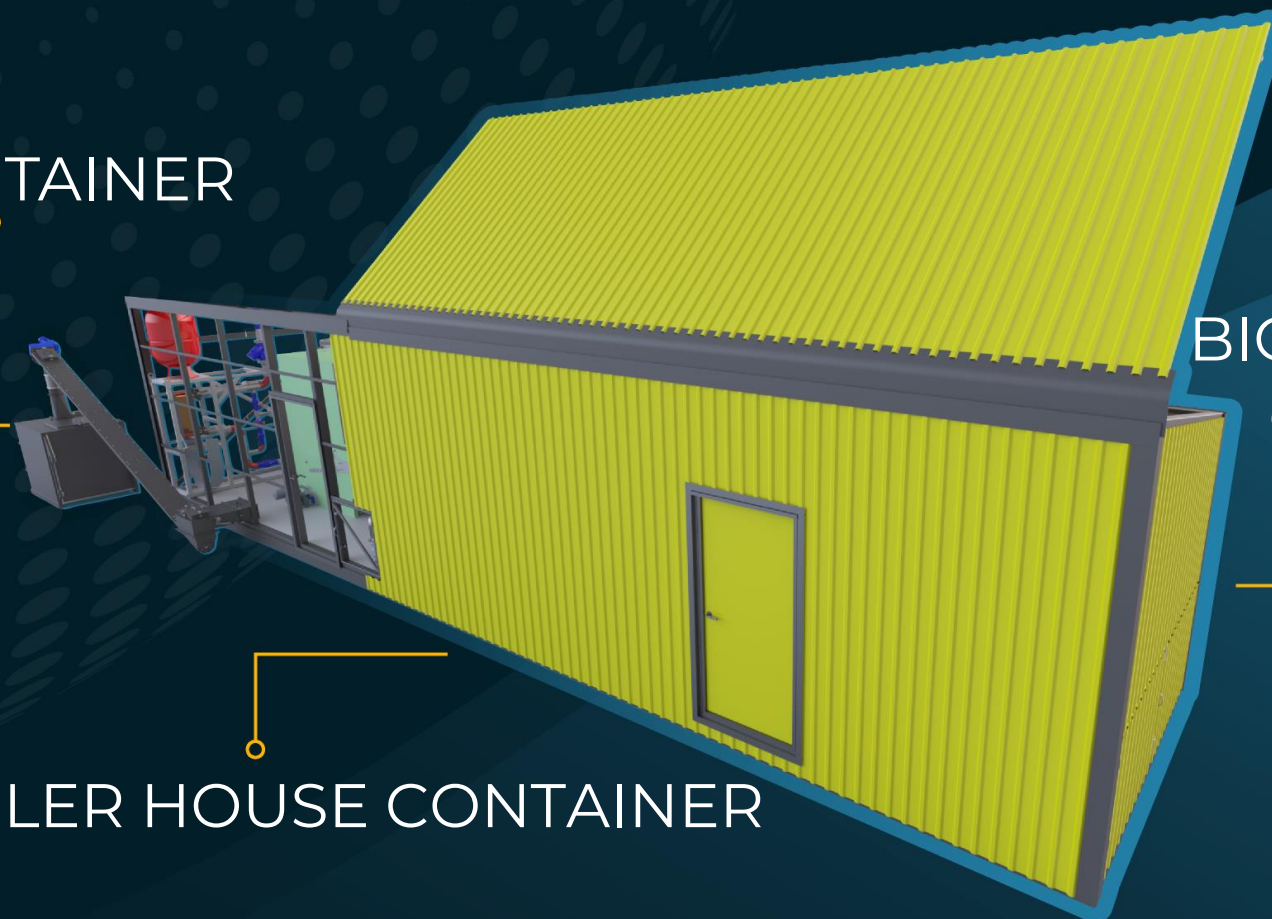
Connect electric cable & connect two DHN pipes. You are all set within hours!

- 3 in 1 solution
- 250 kw capacity*
- compact solution for limited space
- great for private needs
- ability to transport boiler-house in hours
- fully equipped plug-n-play solution

ASH
CONTAINER

BOILER HOUSE CONTAINER

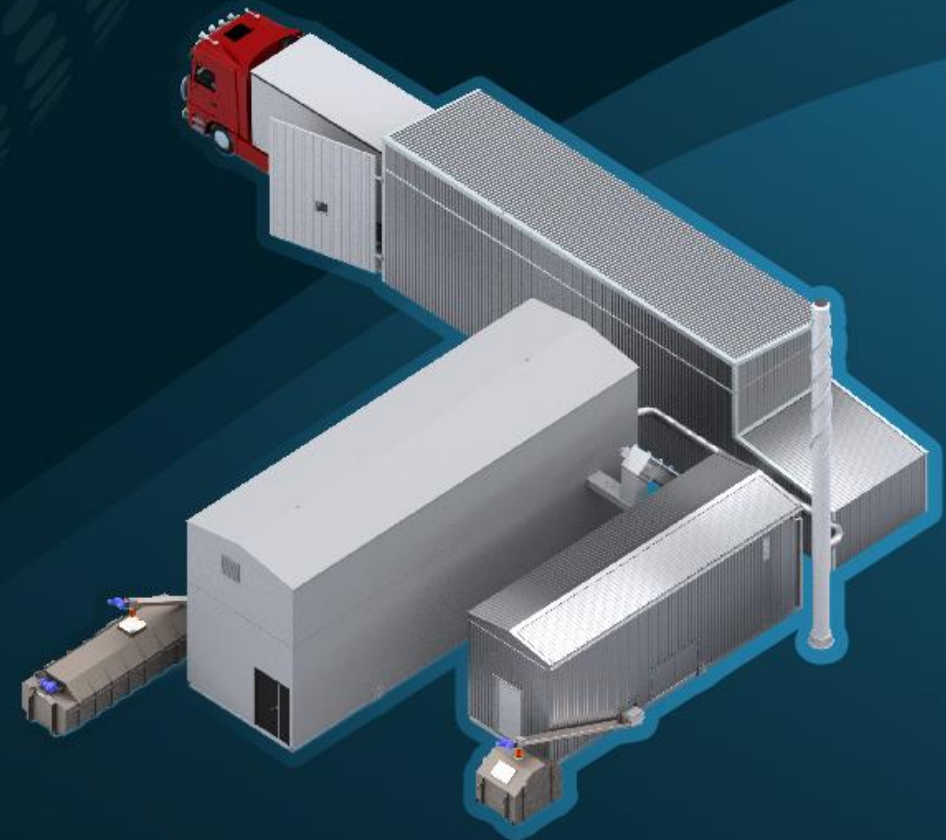
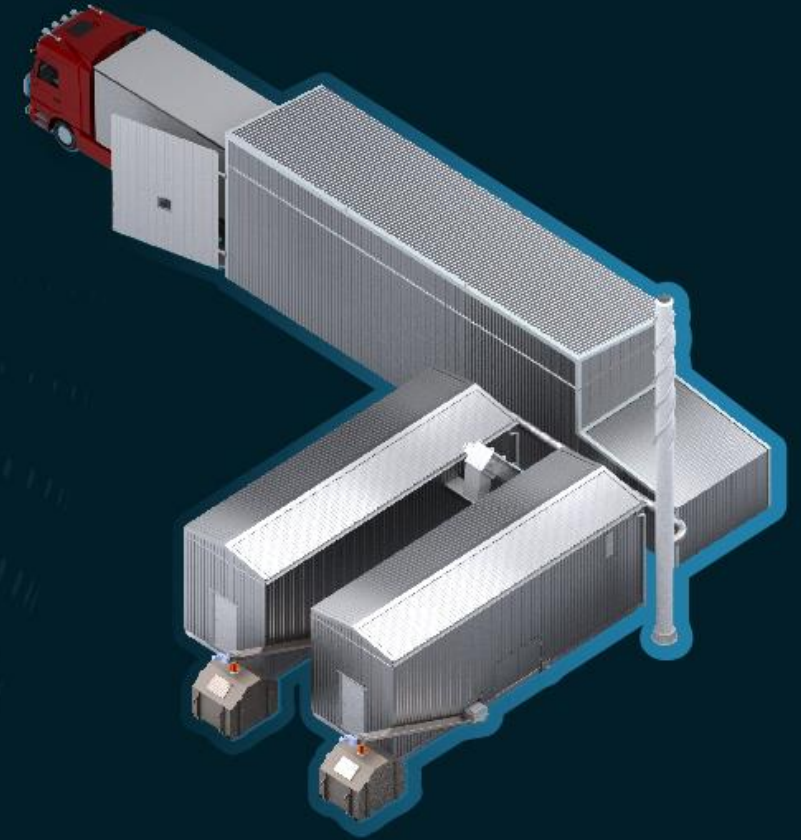
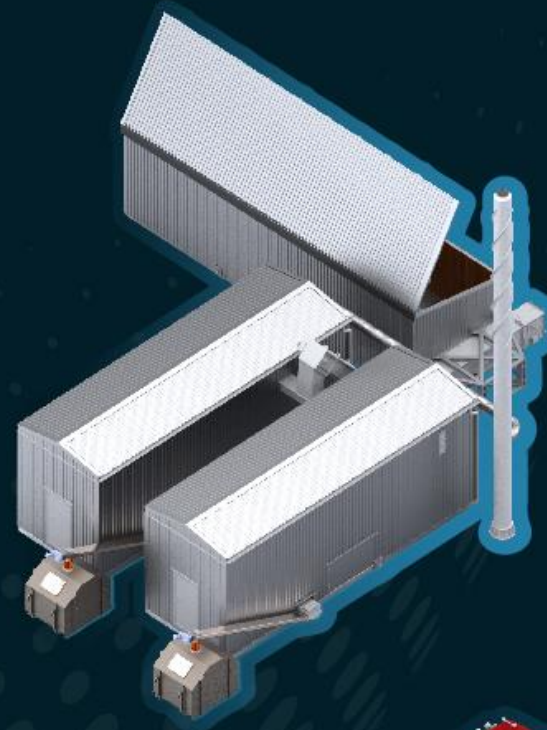
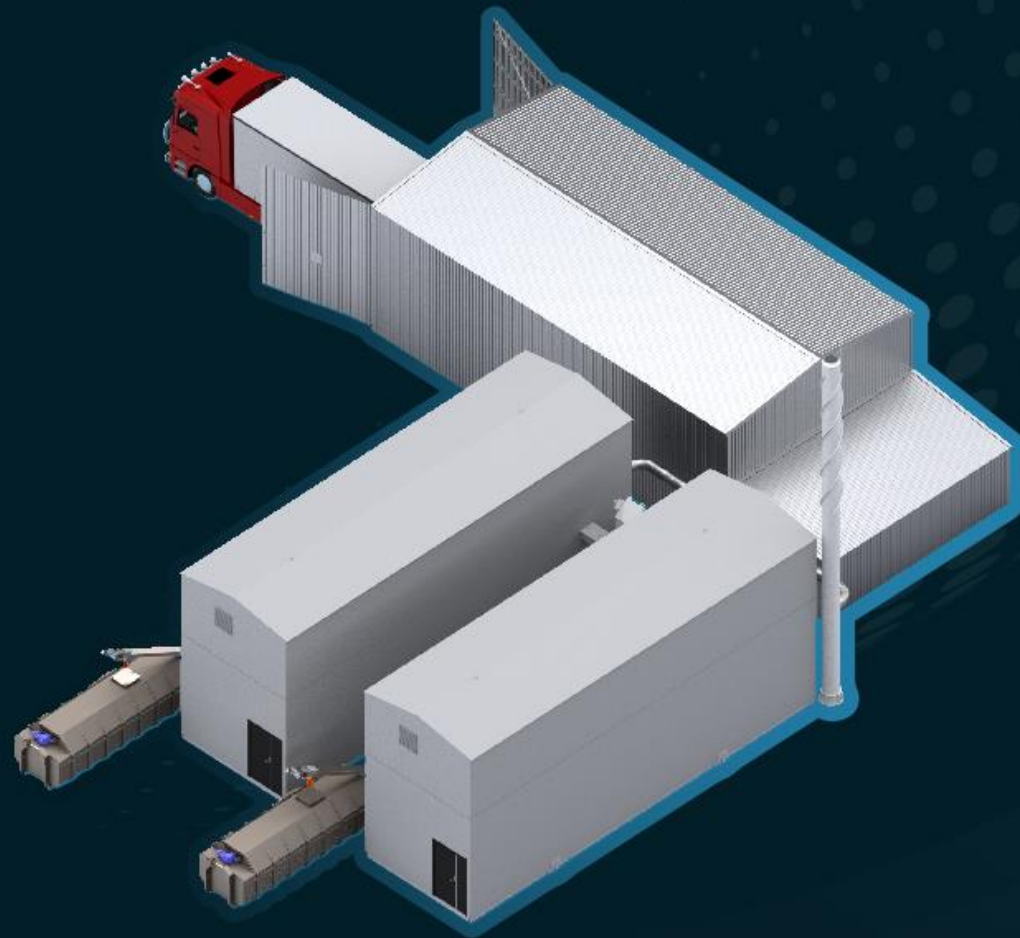
BIOMASS FUEL
CONTAINER



*At 55% woodchip moisture & efficiency rated at $\geq 87\%$

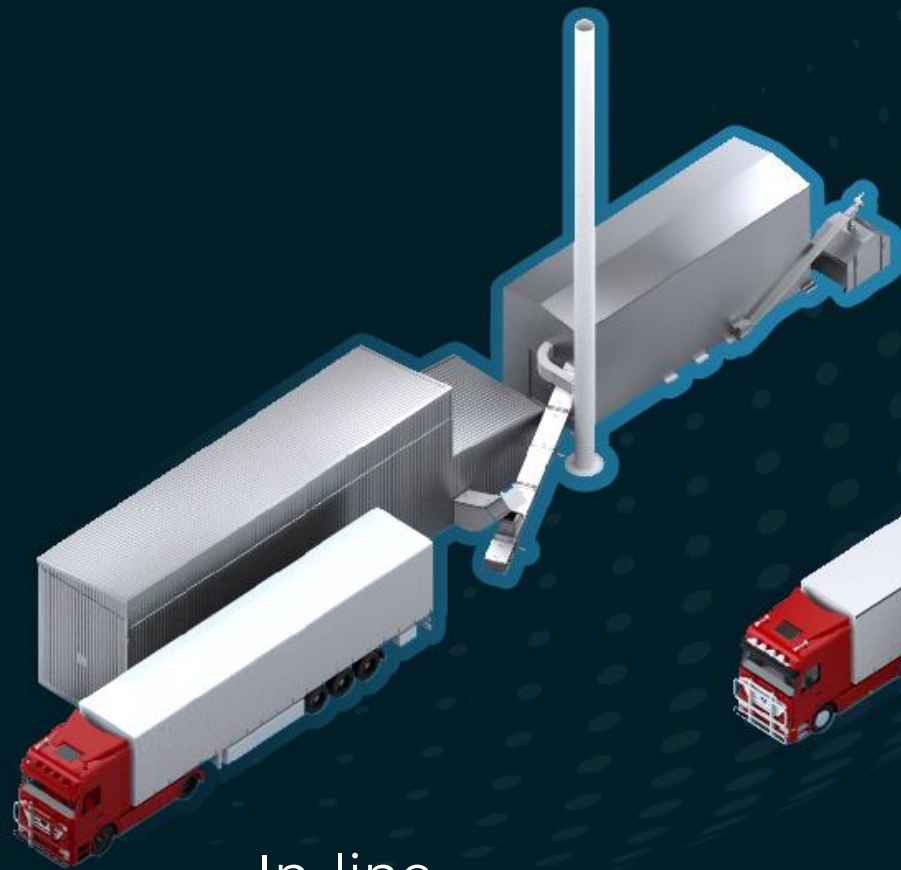
➤ CASCADE CONNECTIONS

All possible combinations of cascade connections are available. Two power units will always be more reliable than one.

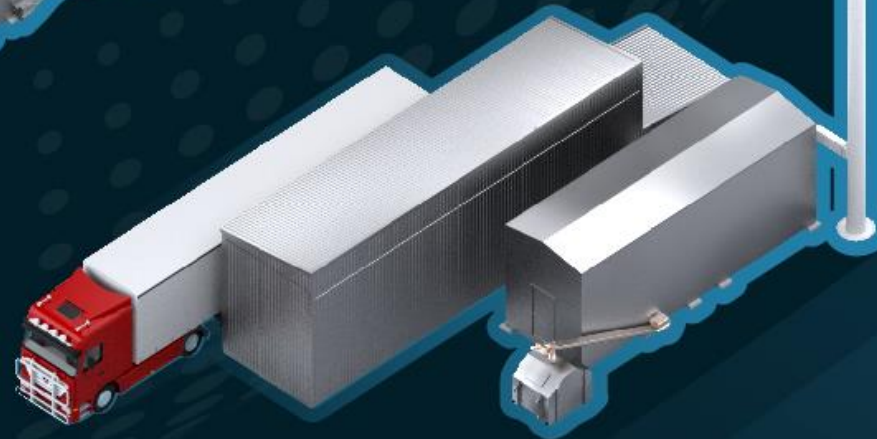


➤ LAYOUT OPTIONS

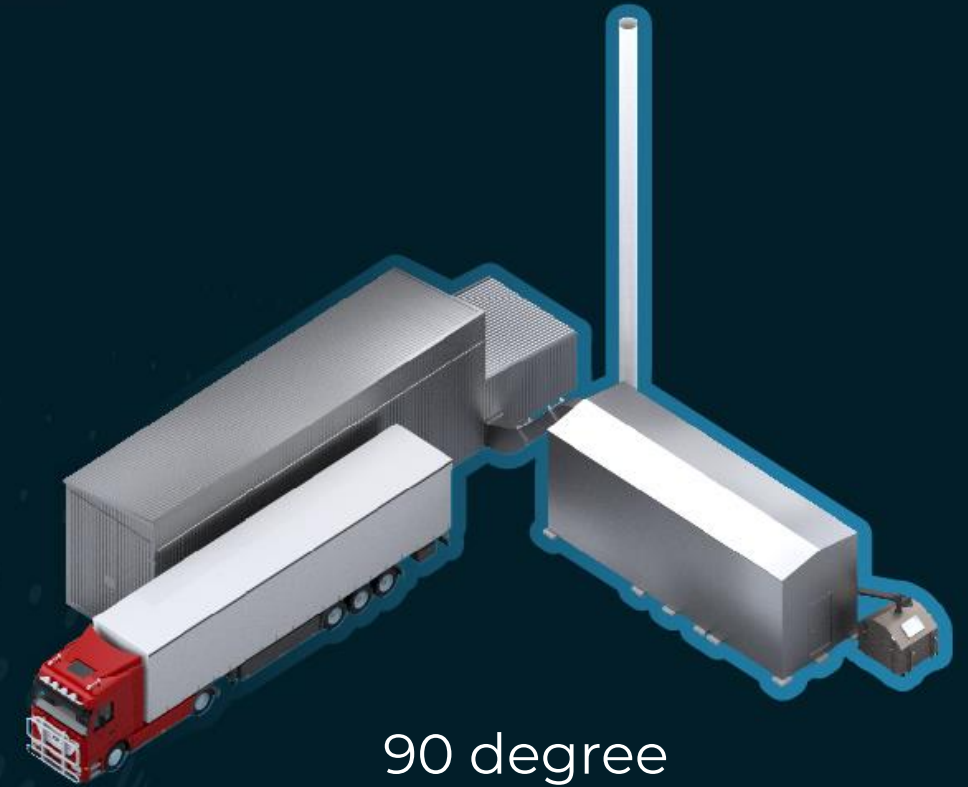
All possible layout options available:



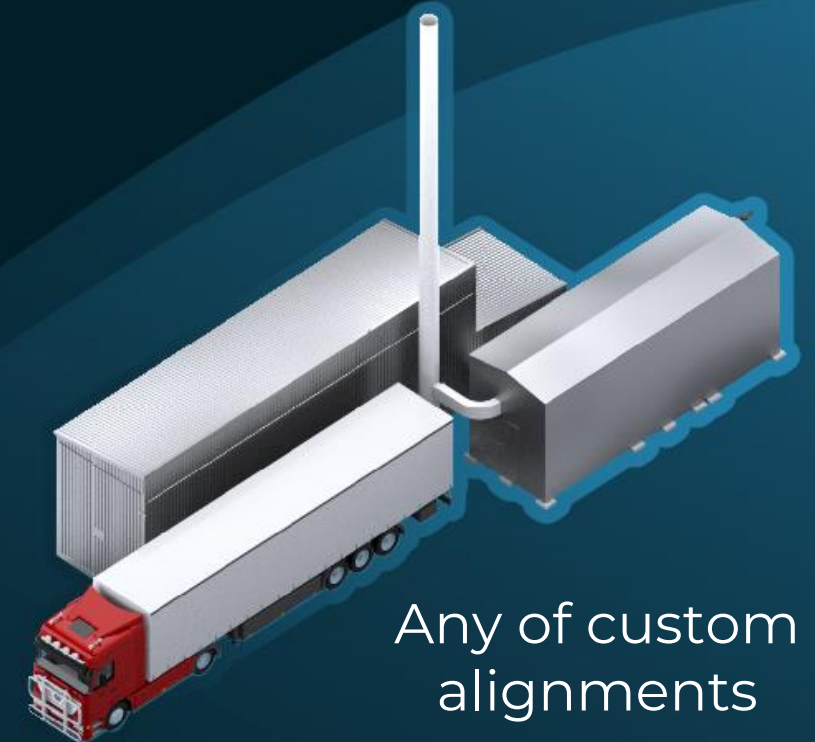
In-line
alignment



Parallel
alignment



90 degree
alignment



Any of custom
alignments

OUR PROJECTS

ROLE OF GENERAL CONTRACTOR

Year 2021 Latvia
Liepāja, woodchip
boilerhouse, 2MW



Year 2023 Latvia
Marupe, woodchip
boilerhouse, 2MW



Latvia, Gatarta wood-
chip boilerhouse,
250kW



Year 2022 Latvia
Palsmane, wood-chip
boilerhouse, 850
kW



Year 2021 Latvia
Birzgale, woodchip
boilerhouse, 800kW



Year 2020 Latvia
Skrīveri, woodchip
boilerhouse, 1MW



Year 2021 Latvia
Dviete, woodchip
boilerhouse, 500kW



Year 2020 Latvia
Aloja, woodchip
boilerhouse, 1MW



Year 2019 Latvia
Salacgrīva, woodchip
boilerhouse, 500kW



Year 2019 Latvia
Liepupe, woodchip
boilerhouse, 350kW



Year 2019 Latvia
Drusti, woodchip
boilerhouse, 800kW



Year 2019 Latvia
Jaunpiebalga,
woodchip
boilerhouse, 500kW



LATVIA



OUR PROJECTS

ROLE OF COMPONENT SUPPLIER

Year 2020 Sweden
Langshyttan, delivery
of one unit 3,5MW
complete boilerhouse



Year 2021 Sweden,
Gnosjo, delivery of
one unit 3,5MW
complete boilerhouse



Year 2021 Sweden,
Ljungby, delivery of
basic components for
6MW power plant



Year 2020 Latvia
Daugavpils, delivery of
four units 10MW
combustion furnaces



Year 2021 Latvia
Daugavpils, delivery of
two units 15MW ESP
filters



Year 2019 Belarus,
Mogolev, delivery of
two units 10MW
combustion furnaces



Year 2019 Poland
Suwalki, delivery of two
units 15MW combustion
furnaces



NORWAY

SWEDEN

FINLAND

ESTONIA

LATVIA

LITHUANIA

BELARUS

POLAND

UKRAINE

➤ KEY FACTS & FIGURES

- 60 professional staff members , of which 5 qualified engineers
- Main manufacturing hall 3500 m², available secondary manufacturing hall of 1200 m²
- Crane lifting capabilities of 25 tons
- In-house capabilities to complete full cycle of metal sheet and profile assembling, welding, surface shot blasting, wet painting, final assembly.
- Modern Hi-definition CNC plasma cutting equipment with rotatable nozzle head + pipe cutting function, sheet rolling, MIG, MAG, TIG welding
- Wide range of metal processing available due to location in Latvia's most industrial area.
- Hot dip galvanizing, CNC turning and milling, large series CNC lasercutting and CNC bending

➤ KEY FACTS & FIGURES

- Deep specialization in wide range of powerplant component manufacturing like – hot water boilers, chimneys, furnaces, conveyors, flue gas ducts, air ducts, scraper bar pushers, multicyclones, platforms, railings etc.
- Proven track record in delivering both bespoke projects and our flagship portable boiler houses
- Portfolio of 90+ completed projects in 7 countries and 10+ municipalities , 20+ industrial sites
- Full compliance with strict EU regulations and focus on state-of-the-art eco friendly & green solutions, contributing to reduction of CO2 emissions

➤ CONTACT US



CEO
Sandis Gromovs
sandis.gromovs@ecoheatholdings.lv
+371 29 185197



Sales representative
Mārtiņš Vītols
trade@ecoheatholdings.lv
+371 25 616180

Ltd "EcoHeat Technologies"
Reg. No.: LV40203155061
Adress: 2 Langervaldes Street,
Raubēni, Cenu parish,
Jelgava district, LV-3002



ECOHEAT

www.ecoheatholdings.lv

[+371 29 185197](tel:+37129185197)

info@ecoheatholdings.lv